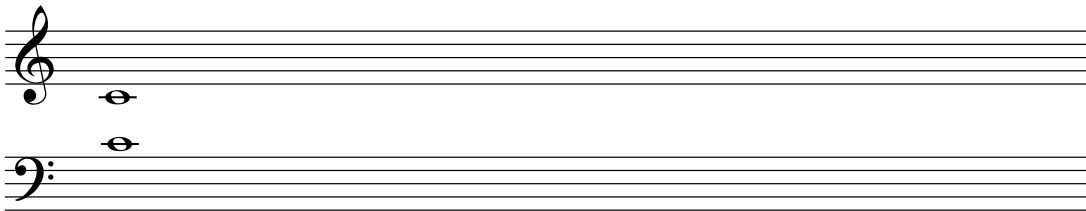


# Notes Off The Staff

When notes are not on the staff they have lines called Leger Lines.



Middle C on the Bass clef and the Treble clef are a mirror image of each other.

With this in mind you can count up or down (see 1 & 4 below)

1	
	<p>C      B      A      G      F</p> <p>A      B      C      D      E</p>
2	
	* ↑ ↓
3	
	<p>E      D      C      B      A</p> <p>C      D      E      F      G</p>
4	

\* If it helps to remind you:  
C is two ledger lines off the top of the Treble clef  
and two ledger lines off the bottom of the Bass clef.