

Key Signatures

The Rules:

1. Keys with # - you take the last sharp and go up by one semitone.
2. Keys with b - you take the second to last flat and that is your signature.
3. The relative minor can be worked out by going down three semitones from the major key note.

Lastly, don't forget:

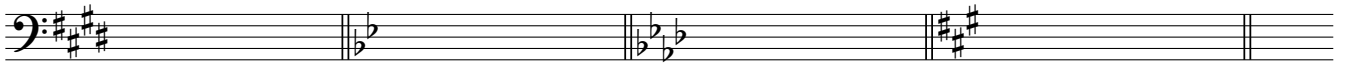
Father Charles Goes Down And Ends Battle : Battle Ends And Down Goes Charles Father

1. Name the keys, both major and minor:

You can use the piano to help



maj: min: maj: min: maj: min: maj: min:



maj: min: maj: min: maj: min: maj: min:

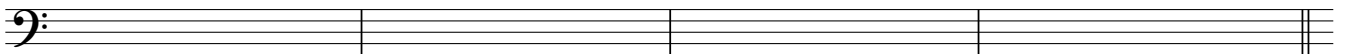


maj: min: maj: min: maj: min: maj: min:

2. Draw the key signatures and name the relative minor key (don't cheat):



A major: minor. B \flat major: minor. D major: minor. F major: minor.



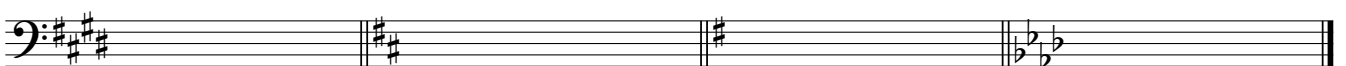
G major: minor. E \flat major: minor. G \flat major: minor. E major: minor.

3. Name the relative major key without using the piano:

Think about how the rule works. And still no cheating



D minor major. F# minor major. G minor major. C minor major.



C# minor major. B minor major. E minor major. F minor major.